



FIND YOUR NEAREST DEALER

[PRODUCTS](#)
[SERVICE & SUPPORT](#)
[PARTS](#)
[ABOUT](#)

Site search

Home > Products > Construction / Production Excavators > ZX350LC-6

ZX350LC-6

Construction Excavator

| | |
|-------------------------|--------------------------|
| Net Power | 202 kW 271 hp |
| Operating Weight | 35 198 kg 77,598 lb. |
| Max Dig Reach | 11.86 m 38 ft. 11 in. |
| Max Dig Depth | 8.18 m 26 ft. 10 in. |



LOCATE DEALER

COMPARE TO COMPETITORS

Accelerate your efficiency.

If you're looking for more efficiency, reliability, and durability, the ZX350LC-6 has an insatiable appetite for work. Loaded with a new, fuel-efficient EPA Final Tier 4 (FT4)/EU Stage IV Isuzu engine, this excavator meets rigid emission standards and no diesel particulate filter is needed. And that's not all. You'll get generous swing torque, dig force, and lift capacity. The spacious cab is designed for operator comfort and productivity, and standard upper-structure handrails provide added safety and accessibility.

The ZX350LC-6 come standard equipped with five years of ZXLink™ Ultimate, giving you 24/7 online access to machine location, health, utilization, fuel consumption, and other valuable information – so you can better understand costs and jobsite performance.

Downloads

[Features and Specs Brochure](#)

FEATURES

+ Expand All Features

| | |
|-------------------------------------|---|
| Engine | + |
| Durable structure and undercarriage | + |
| Hydraulics | + |
| Simple controls | + |
| Comfortable cab | + |
| Easy to maintain | + |
| ZXLink™ | + |

SPECIFICATIONS

– Expand All Specifications

| | |
|----------------------------------|------------------------|
| Driveline | – |
| Emission Rating | Tier 4 |
| Number Of Cylinders (Per Engine) | 6 |
| Displacement | 7.8 ltr 475 Inches³ |
| Rated speed | 1900 rpm |
| Engine Output - Net | 202 kW |

| | |
|----------------------------------------------|---------------------|
| | 271 hp |
| Number Of Carrier Rollers - Each Side | 2 |
| Number Of Track Rollers - Each Side | 8 |
| Track Shoe Width | 800 mm 32 inches |

Dimensions

| | |
|---------------------------------------------|-------------------------------|
| Transport Length Mono Boom | 11290 mm 37 ft ft/in |
| Transport Height - Maximum | 3600 mm 11 ft 10 in ft/in |
| Overall Undercarriage Width | 3390 mm 11 ft 2 in ft/in |
| Track Length On Ground | 4050 mm 13 ft 3 in ft/in |
| Undercarriage Overall Length | 4940 mm 16 ft 2 in ft/in |
| Tailswing Radius | 3600 mm 11 ft 10 in ft/in |
| Ground Clearance | 510 mm 20 inches |
| Width over standard tracks | 3390 mm 11 ft 2 in ft/in |
| Track Gauge | 2590 mm 8 ft 6 in ft/in |
| Digging Reach - Mono Boom | 11860 mm 38 ft 11 in ft/in |
| Ground Level Reach - Mono Boom | 11670 mm 38 ft 3 in ft/in |
| Dig Height - Mono Boom | 10750 mm 35 ft 3 in ft/in |
| Dump Height - Mono Boom | 7630 mm 25 ft ft/in |
| Dig depth - 2.44m / 8'ft flat bottom | 8040 mm 26 ft 5 in ft/in |
| Dig Depth - Mono Boom | 8180 mm 26 ft 10 in ft/in |

Capacities


| | |
|-----------------------|-----------------------------|
| Fuel Tank | 630 ltr 166 gallons (US) |
| Hydraulic Tank | 180 ltr 48 gallons (US) |

Performance

| | |
|--------------------------------|----------------------|
| Ground Bearing Pressure | 49.3 kPa 7.15 PSI |
| Dipper Tearout | 159 kN 35745 lbf |

Weights

| | |
|-------------------------|-----------------------|
| Operating Weight | 35090 kg 77360 lbs |
|-------------------------|-----------------------|

 Download & Print

COMPARE

Select models to compare to the Hitachi ZX350LC-6

(Maximum of 3)

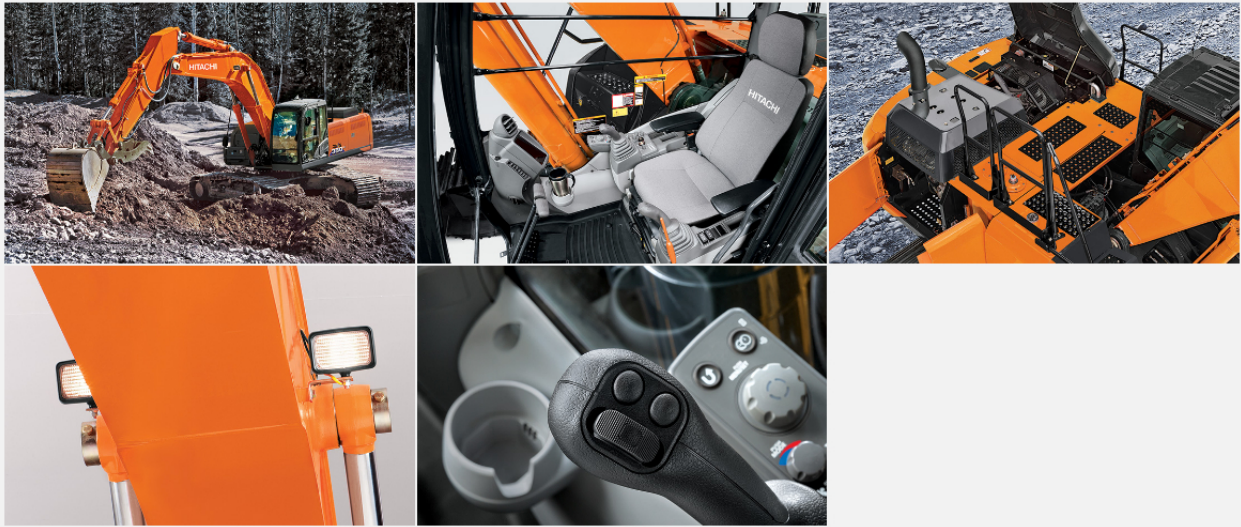
HITACHI MODELS

- HITACHI ZX 350 LC-3
- HITACHI ZX 350 LC-6
- HITACHI ZX 350 LC-6 (ME)

COMPETITOR MODELS

- CATERPILLAR 330 C L
- CATERPILLAR 330 C LN ME
- CATERPILLAR 336 D2 ME
- DOOSAN DX 300 LC-5 SLR
- DOOSAN DX 350 LC
- HYUNDAI HX 330 L
- HYUNDAI R 330 LC-9S HIGH WALKER
- HYUNDAI R 330 LC-9SH HIGH WALKER
- SAMSUNG SE 350 LC-2
- SANY SY 365 C

GALLERY



Customize your solution.

BUILD YOUR OWN