



0% FOR 48 MONTHS WITH ZERO DOWN*

[GET DETAILS](#)

BACKHOE LOADERS

420F2/420F2 IT

[< Back](#)

BUILD & QUOTE

Buying online has never been easier. Find local equipment at a dealer near you so you can build, quote and purchase products.

0% FOR 48 MONTHS WITH ZERO DOWN*

[OFFER DETAILS](#)

[Calculate my Payment](#)

[FIND YOUR DEALER](#) >

[USED BACKHOE LOADERS](#) >

[VIEW PRODUCT DOWNLOADS](#)



420F2/420F2 IT Backhoe Loader

PHOTO **VIDEOS**



< 1 of 2 >

[RELATED PRODUCTS](#)

[BENEFITS & FEATURES](#)

SPECIFICATIONS

[COMPARE MODELS](#)

OVERVIEW

Experience the Backhoe Loader designed around customer feedback. The Cat 420F2 Backhoe Loader puts all the machine controls at the operator's fingertips. Operate all auxiliary controls with thumb rollers. Move from job site to job site quickly and smoothly with the additional 6th gear on the autoshift transmission and optional lock-up torque converter.

ENGINE

UNITS: **US** **METRIC**

Net Power - SAE J1349	93.0 HP
Bore	4.13 in
Stroke	5.0 in
Displacement	268.0 in ³
Engine Model	Cat® C4.4 ACERT™
Gross Power - ISO 14396	100.0 HP
Gross Power - SAE J1995	102.0 HP
Net Peak Power - 1,800 rpm - EEC 80/1269	106.0 HP
Net Peak Power - 1,800 rpm - ISO 9249	106.0 HP
Net Peak Power - 1,800 rpm - SAE J1349	105.0 HP
Net Torque Rise - 1,400 rpm - SAE J1349	46%
Rated Net Power - 2,200 rpm - EEC 80/1269	94.0 HP

Rated Net Power - 2,200 rpm - ISO 9249	94.0 HP
Rated Net Power - 2,200 rpm - SAE J1349	93.0 HP
Net Peak Torque - 1,400 rpm	322.0 ft-lb
Note	Engine meets Tier 4 Final emission standards.
Rated Net Power - ISO 9249	94.0 HP
Rated Net Power - SAE J1349	93.0 HP

WEIGHTS

Operating Weight - Maximum	24251.0 lb
Cab - ROPS/FOPS	359.0 lb
Ride Control	31.0 lb
Four Wheel Drive	364.0 lb
Air Conditioning	93.0 lb
Counterweights - Option 1	255.0 lb
Counterweights - Option 2	530.0 lb
Counterweights - Option 3	1015.0 lb
Auto-Shift Transmission	525.0 lb
Extendible Stick	672.0 lb
Loader, IT with Quick Coupler	699.0 lb
MP Bucket (1.00 m ³ /1.30 yd ³) - No Forks or Teeth	1642.0 lb
Operating Weight - Maximum - ROPS Capacity	24251.0 lb
Operating Weight - Minimum	17033.0 lb

BACKHOE

Dig Depth - Standard	14.3 ft
Dig Depth - E-Stick Extended	17.9 ft

HYDRAULIC SYSTEM

Pump Type	Variable Flow, Axial Piston
Pump Capacity at 2,200 rpm	43.0 gal/min
System Pressure - Backhoe	3600.0 psi
System Pressure - Loader	3600.0 psi
Type	Closed Center

TRANSMISSION

Auto-Shift - Optional - Forward 1st	3.6 mile/h
Auto-Shift - Optional - Forward 2nd	5.7 mile/h
Auto-Shift - Optional - Forward 3rd	7.0 mile/h
Auto-Shift - Optional - Forward 4th	12.0 mile/h
Auto-Shift - Optional - Forward 5th	16.0 mile/h

Auto-Shift - Optional - Forward 6th	25.0 mile/h
Auto-Shift - Optional - Reverse 1st	3.6 mile/h
Auto-Shift - Optional - Reverse 2nd	7.6 mile/h
Power Shuttle Transmission - Forward 1st	3.4 mile/h
Power Shuttle Transmission - Forward 2nd	5.6 mile/h
Power Shuttle Transmission - Forward 3rd	13.0 mile/h
Power Shuttle Transmission - Forward 4th	25.0 mile/h
Power Shuttle Transmission - Reverse 1st	3.4 mile/h
Power Shuttle Transmission - Reverse 2nd	5.6 mile/h
Power Shuttle Transmission - Reverse 3rd	13.0 mile/h
Power Shuttle Transmission - Reverse 4th	25.0 mile/h
Auto-Shift - Optional - Reverse 3rd	17.0 mile/h
Auto-Shift Transmission - With Lock-Up Torque Converter - Optional: Forward - 1st	3.6 mile/h
Auto-Shift Transmission - With Lock-Up Torque Converter - Optional: Forward - 2nd	5.7 mile/h
Auto-Shift Transmission - With Lock-Up Torque Converter - Optional: Forward - 3rd	7.0 mile/h
Auto-Shift Transmission - With Lock-Up Torque Converter - Optional: Forward - 4th	12.0 mile/h
Auto-Shift Transmission - With Lock-Up Torque Converter - Optional: Forward - 5th	14.0 mile/h
Auto-Shift Transmission - With Lock-Up Torque Converter - Optional: Forward - 5th LUC	15.0 mile/h
Auto-Shift Transmission - With Lock-Up Torque Converter - Optional: Forward - 6th	25.0 mile/h
Auto-Shift Transmission - With Lock-Up Torque Converter - Optional: Forward - 6th LUC	25.0 mile/h
Auto-Shift Transmission - With Lock-Up Torque Converter - Optional: Reverse - 1st	3.6 mile/h
Auto-Shift Transmission - With Lock-Up Torque Converter - Optional: Reverse - 2nd	7.6 mile/h
Auto-Shift Transmission - With Lock-Up Torque Converter - Optional: Reverse - 3rd	17.0 mile/h

SERVICE REFILL CAPACITIES

Cooling System with Air Conditioning	5.9 gal (US)
Diesel Exhaust Fluid*	5.0 gal (US)
Engine Oil - With Filter	2.3 gal (US)
Front Axle (4WD)	2.9 gal (US)
Front Axle (4WD) - Planetaries	0.2 gal (US)
Fuel Tank	42.0 gal (US)
Hydraulic System	25.1 gal (US)
Rear Axle	4.4 gal (US)
Rear Axle - Planetaries	0.4 gal (US)
Transmission - Auto-Shift - 4WD	5.0 gal (US)
Transmission - Power Shuttle - 2WD	4.0 gal (US)
Transmission - Power Shuttle - 4WD	4.0 gal (US)

Hydraulic Tank	10.6 gal (US)
Note (1)	* Must meet the requirements outlined in ISO 22241.
Note (2)	Requires ultra-low sulfur fuel less than or equal to 15 ppm fuel sulfur.
AXLE RATINGS	
Front Axle (2WD) - Dynamic	20233.0 lb
Front Axle (2WD) - Static	50582.0 lb
Front Axle (4WD) - Dynamic	20233.0 lb
Front Axle (4WD) - Static	50582.0 lb
Rear Axle - Dynamic	20233.0 lb
Rear Axle - Static	50582.0 lb
Axle Oscillation	10 Degrees
BRAKES	
Feature (1)	Brakes meet the following standards: SAE J1473 and ISO 3450 requirements.
Feature (2)	Self-adjusting, completely enclosed and sealed.
Feature (3)	Foot operated brake pedals can be interlocked for roading.
Feature (4)	Parking/secondary brakes are independent of the service brake system.
Feature (5)	Parking brake is mechanically applied through an adjustable hand lever located on the right console.
ENGINE FEATURES	
Feature (1)	Regeneration is passive and does not require any input from the operator or disrupt work.
Feature (10)	Dry-type axial seal air cleaner with integral precleaner, automatic dust ejection system, and filter condition indicator.
Feature (11)	Direct electric, 12-volt starting and charging system with 880 CCA Group 31 maintenance free battery.
Feature (12)	Standard glow plug starting aid system for efficient cold weather starting.
Feature (13)	High contact ratio/gear train, peripheral fixed isolation top cover and open deck block design reduce bare engine noise.
Feature (14)	Higher low end torque for better engine/machine performance.
Feature (15)	Engine is equipped with electric fuel priming pump.
Feature (2)	Three-ring pistons made of lightweight, silicon/aluminum alloy for strength and maximum thermal conductivity.
Feature (3)	Forged chrome/molybdenum-steel crankshaft with crankshaft with either induction hardened or nitrocarburized journals.
Feature (4)	Front and rear crankshaft oil seals are "lip" type Viton and PTFE designs featuring an integral dust lip.
Feature (5)	Heat resistant, silicone-chrome steel intake and STELLITE-faced exhaust valves provide long life.
Feature (6)	Cylinder block is high strength, cast iron alloy of deep skirt, monobloc design for increased strength and long life.
Feature (7)	Cylinder head is high strength, cast iron alloy construction with extra duty wall and deck thickness.
Feature (8)	Cylinder head's intake and exhaust ports are precision cast to promote optimum gas flow.

Feature (9)	Direct injection fuel system provides accurate fuel delivery; remote mounted electric lift pump improves serviceability.
-------------	--

STANDARDS

Cab - FOPS	SAE J/ISO 3449 APR98 LEVEL II and ISO 3449: 1992 LEVEL II
Cab - ROPS	SAE J1040 MAY94; ISO 3741 1994
Cab - Sound	ANSI/SAE J1166 OCT98 is 79 dB(A)
Brakes	SAE J/ISO 3450; ISO 3450 1996
Exterior Sound	SAE J188 JUN86 is 76 dB(A)

STEERING

Axle Oscillation	11°
Bore	2.6 in
Power Steering	Hydrostatic
Rod Diameter	1.4 in
Stroke	4.7 in
Turning Circle - 2WD/AWD (inner wheel not braked) - Outside Front Wheels	26.8 ft
Turning Circle - 2WD/AWD (inner wheel not braked) - Outside Widest Loader Bucket	36.0 ft
Type	Front Wheel

TIRES

Choice 1	Front: 11L-16 (12 ply) F-3/Rear: 19.5L-24 (12 ply) R4 ATU
Choice 2	Front: 12.5/80-18 (12 ply) 1-3/Rear: 19.5L-24 (12 ply) ATU
Choice 3	Front: 12.5/80-18 NHS (12 ply) 1-3/Rear: 21L-24 (16 ply) R4 ATU
Choice 4	Front: 340/80R 18/Rear: 19.5L-24 (12 ply) R4 ATU
Choice 5	Front: 340/80R 18/Rear: 500/70R 24 RT

SWEAR BY EQUIPMENT MANAGEMENT

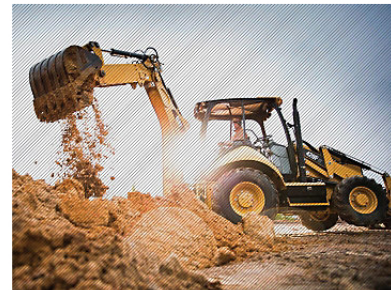
Fuel costs. Labor costs. Maintenance costs. They can all tax your patience. But with timely, accurate data, you can better manage your equipment to keep operating expenses in line. Cat® EMSolutions offers everything you need to control costs, help your guys work better, reduce risks and get more done every day.

[SEE HOW](#)

BACKHOE LOADER MAINTENANCE

From expert tips and videos to the latest offers, we're making it easier to maintain your machine. Check out our Parts Reference Guides for all the part numbers you might need during your machine's first 3,000 hours of operation. You can even browse and buy right online.

[LEARN MORE](#)



PRODUCTS

New
Equipment
Power Systems
Attachments

INDUSTRIES

SUPPORT

Financing & Insurance
Technology & Solutions

COMPANY

Caterpillar.com
Careers
Corporate Press Releases
Caterpillar Brands

CONNECT WITH CAT®

Facebook
 Google Plus
 LinkedIn
 Twitter

[Parts](#)

Rental

[Rental Equipment - CatRentalStore.com](#)

Used

[Used Equipment - CatUsed.com](#)

Cat[®] Merchandise

Home & Outdoor

[Protect Your Investment](#)

[Operate Efficiently and Safely](#)

[Maintenance & Support](#)

[Find Your Dealer](#)

[Contact Us](#)

[Safety Services](#)

[Job Site Solutions](#)

[Investors](#)

NEWS AND EVENTS

[Product & Service Announcements](#)

[Press Kits](#)

[Trade Shows & Events](#)

[Customer Stories](#)

 [YouTube](#)

 [Instagram](#)

[All Social Media Accounts](#)

[Cat Kids](#)