

Loaders / S100 Skid-Steer Loader

Specifications & Options

S100

[Close/Open all](#)

[PDF version](#)

Machine Rating

Rated operating capacity (ISO 14397-1)	457 kg
Tipping load (ISO 14397-1)	915 kg
Pump capacity	36 L/min
System relief at quick couplers	20.7 MPa
Max. travel 2-speed (SJC controls)	13.4 km/h
Max. travel 1 speed (manual controls)	8.2 km/h

Engine

Make / Model	Kubota / V1505-T4F-ST5
Cooling	Liquid
Maximum power at 2300 RPM (ISO 14396)	18.2 kW
Torque at 1600 RPM (ISO 9249) Gross	86.4 Nm
Number of cylinders	4
Displacement	1,498 cm ³
Fuel tank	45 L

Weights

Operating weight (with HD tyres, 50 inch C/I bucket)	1,860 kg
Shipping weight (with HD tyres, without bucket)	1,693 kg
Operating weight (with SOLID tyres, 50 inch C/I bucket)	2,149 kg
Shipping weight (with SOLID tyres, without bucket)	2,074 kg

Dimensions

(A)	Operating height	3,306 mm
(B)	Height with operator cab	1,878 mm
(C)	Angle of departure	25 °
(D)	Ground clearance	167 mm
(E)	Wheelbase	818 mm
(F)	Length without attachment	2,262 mm
(G)	Length with standard bucket	2,800 mm
(H)	Rollback at ground position	26 °
(I)	Dump height with standard bucket	2,084 mm
(J)	Height to bucket hinge pin	2,633 mm
(K)	Dump reach at maximum height	412 mm
(L)	Dump angle at maximum height	43 °
(M)	Rollback fully raised at maximum height	95 °
(N)	Width over standard bucket	1,270 mm
(O)	Turning radius with standard bucket	1,731 mm

(P)	Track, standard tyres	967 mm
(Q)	Width over standard tyres	1,167 mm

⊖ Controls

Vehicle steering	Direction and speed controlled by two hand levers
Loader hydraulics tilt and lift	Separate foot pedals
Front auxiliary (standard)	Lateral movement of right-hand steering lever

⊖ Drive System

Transmission	Infinitely variable tandem hydrostatic piston pumps, driving two fully reversing hydrostatic motors
--------------	---

⊖ Standard Features

- Bobcat Interlock Control System (BICS)
- Hand and Foot Controls
- Operator cab Deluxe (1)
- Standard Seat
- Seat belt
- Seat bar
- Bob-Tach™ frame
- 27 x 8.50-15, 6-ply, Bobcat heavy duty tyres
- Auxiliary hydraulics: variable flow/maximum flow
- Operating lights, front and rear
- Lift arm support
- Parking brake
- Spark arrestor muffler
- Engine/hydraulics system shutdown
- Automatically activated glow plugs
- Instrumentation
- Warranty: 12 months or 2000 hours (whichever occurs first)

(1) Roll Over Protective Structure (ROPS) – meets requirements of SAE-J1040 and ISO 3471; Falling Object Protective Structure (FOPS) – meets requirements of SAE-J1043 and ISO 3449, Level I. Cab Deluxe includes Interior cab foam, top and rear windows, deluxe wire harness, domelight and electrical power port.

⊖ Options

- Factory Options
 - Selectable Joystick Controls (SJC)
 - Two speed with 3-point belt
 - Cab enclosure with heating
 - Cloth Suspension Seat
 - Vinyl Suspension Seat
 - Keyless start with password capability
 - Power Bob-Tach™
 - Hydraulic bucket positioning (including ON/OFF switch)
 - Back-up alarm
 - 28x9-15 Hard Duty Solid Tyres
 - Road kit
 - Beacon
- Dealer Installed Options
 - Cab enclosure kit
 - Lexan rear window kit
 - Counterweights
 - Side windows kit
 - Top window kit Lexan
 - Front door kit
 - Lexan door kit
 - Special applications front door kit
 - Counterweight kit
 - Single-point lift kit
 - Hydraulic bucket positioning kit
 - Power Bob-Tach™ kit
 - Back up alarm kit
 - Fire extinguisher kit
 - Fresh air heater kit
 - Plumbing kit for fresh air heater
 - Rear window wiper kit
 - Warning lights: rotating beacon, strobe light
 - Seat belt kit
 - Third gas spring kit (for heated cab)
 - Additional gas spring kit (for tipping the cab)
 - Tailgate lock kit
 - Fuel cap locking kit
 - FOPS kit

⊖ Attachments

- Angle Brooms
- Auger Accessories
- Bale Forks
- Breaker Accessories
- Breakers

- Brush Saws
- Construction / Industrial Buckets
- Dirt Buckets
- Dumping Hoppers
- General Purpose (GP) Bucket
- Grapples, Industrial
- Landplanes
- Low Profile Buckets
- Mowers
- Pallet Fork Accessories
- Root Grapples
- Scrapers
- Skeleton Buckets
- Snow Blades
- Soil Conditioners
- Sweepers
- Tillers
- Utility Forks

⊖ **Environmental**

Noise level LpA(EU Directive 2006/42/EC)	86 dB(A)
Operator LpA uncertainty	2 dB(A)
Noise level LWA(EU Directive 2000/14/EC)	96 dB(A)
Noise level LWA uncertainty	
Hard-arm vibration uncertainty	

Certain specification(s) are based on engineering calculations and are not actual measurements. Specification(s) are provided for comparison purposes only and are subject to change without notice. Specification(s) for your individual Bobcat equipment will vary based on normal variations in design, manufacturing, operating conditions, and other factors.



One Tough Animal.

PRODUCTS

- Skid-Steer Loaders
- Compact Tracked Loaders
- All-Wheel Steer Loaders
- Compact Excavators
- Telescopic Loaders
- Telescopic Handlers
- Rotary Telescopic Handlers
- Attachments

LEARN

- Bobcat Engine
- Technology
- Get a Brochure
- Request a Demo

OWNERSHIP

- Parts and Accessories
- Service and Support
- Warranty

BUY

- Request a Quote
- Used Equipment
- Merchandising Shop

SOCIAL MEDIA

- Social Hub

OUR COMPANY

- About Bobcat
- News and Media

DEALERS

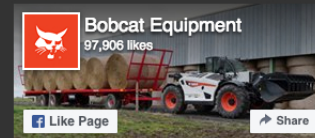
- Find a Dealer
- Dealership Opportunities
- Dealer Network

HELP CENTER

- FAQs

Dealer Recruitment

Sign Up



Privacy Policy | Cookie Policy | Applicant Policy | Terms of Use



Bobcat is a Doosan Company. Doosan is a global leader in construction equipment, power and water solutions, engines, and engineering, proudly serving customers and communities for more than a century. Bobcat®, the Bobcat logo and the colors of the Bobcat machine are registered trademarks of Bobcat Company in the United States and various other countries. ©2018 Bobcat Company. All rights reserved.